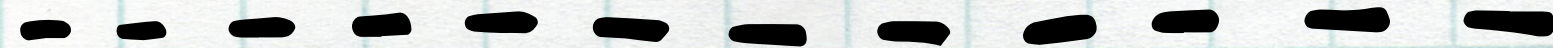
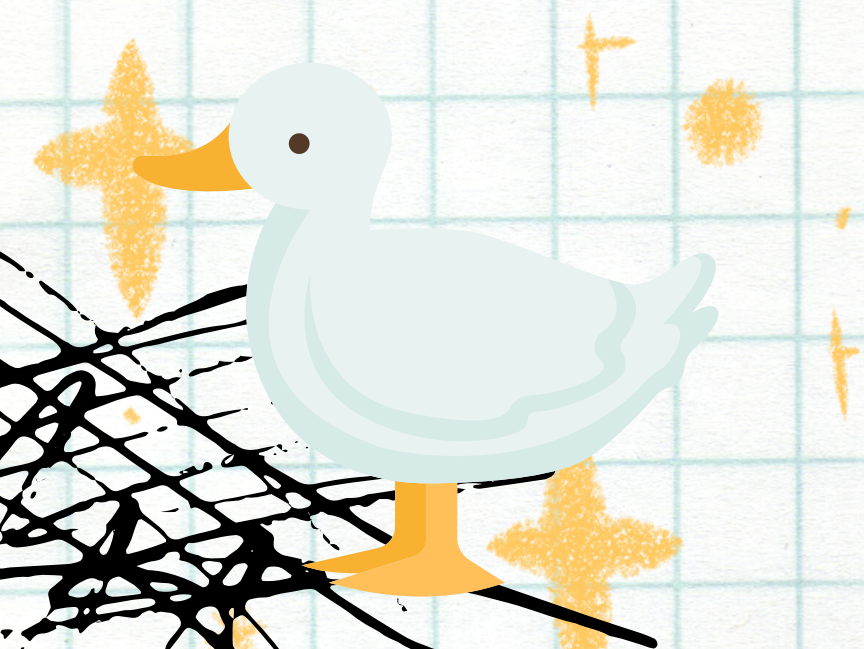


23/09/2022

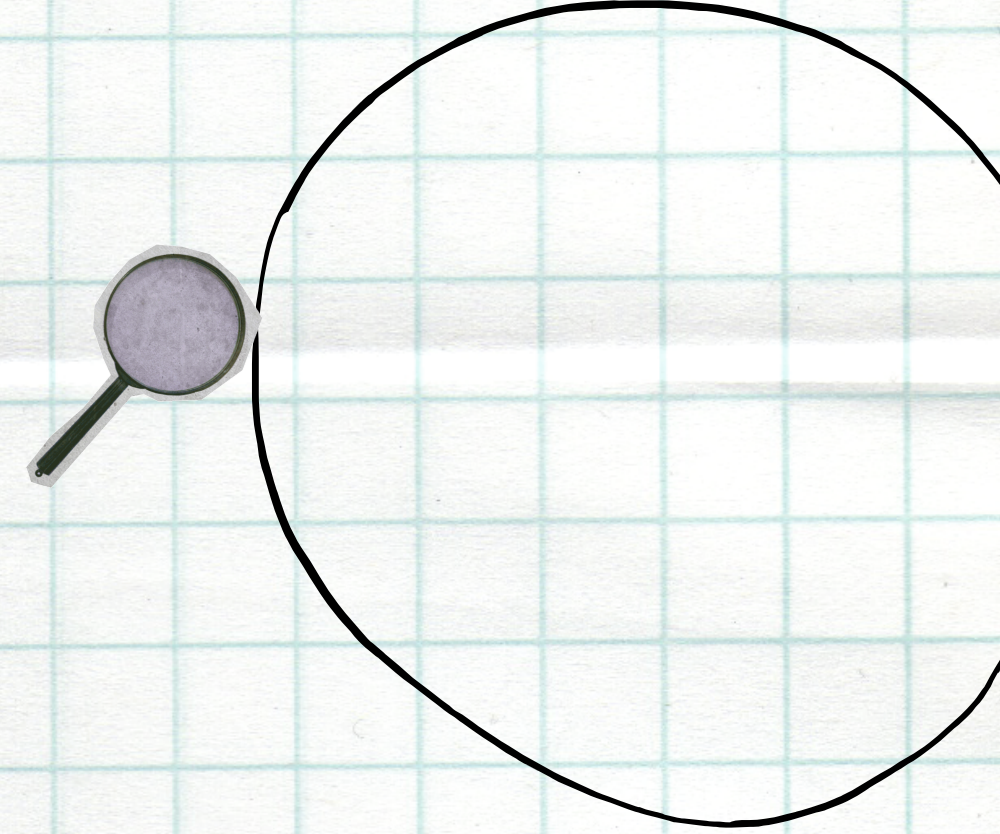
DUCK FACE



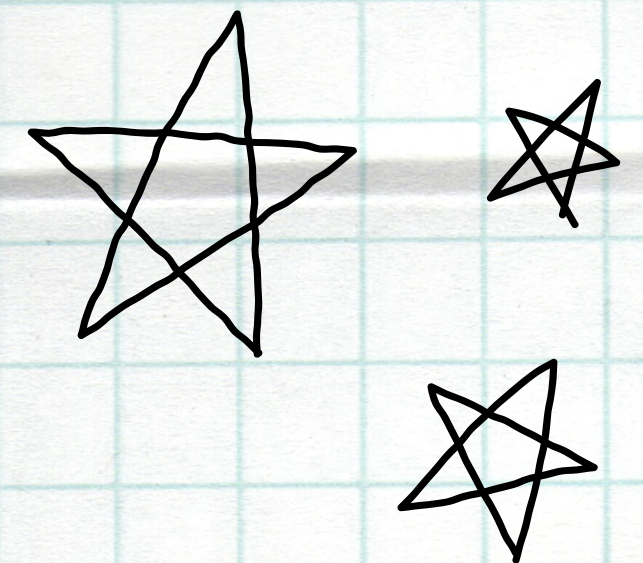
Hanna, Jose Maria, Paúl



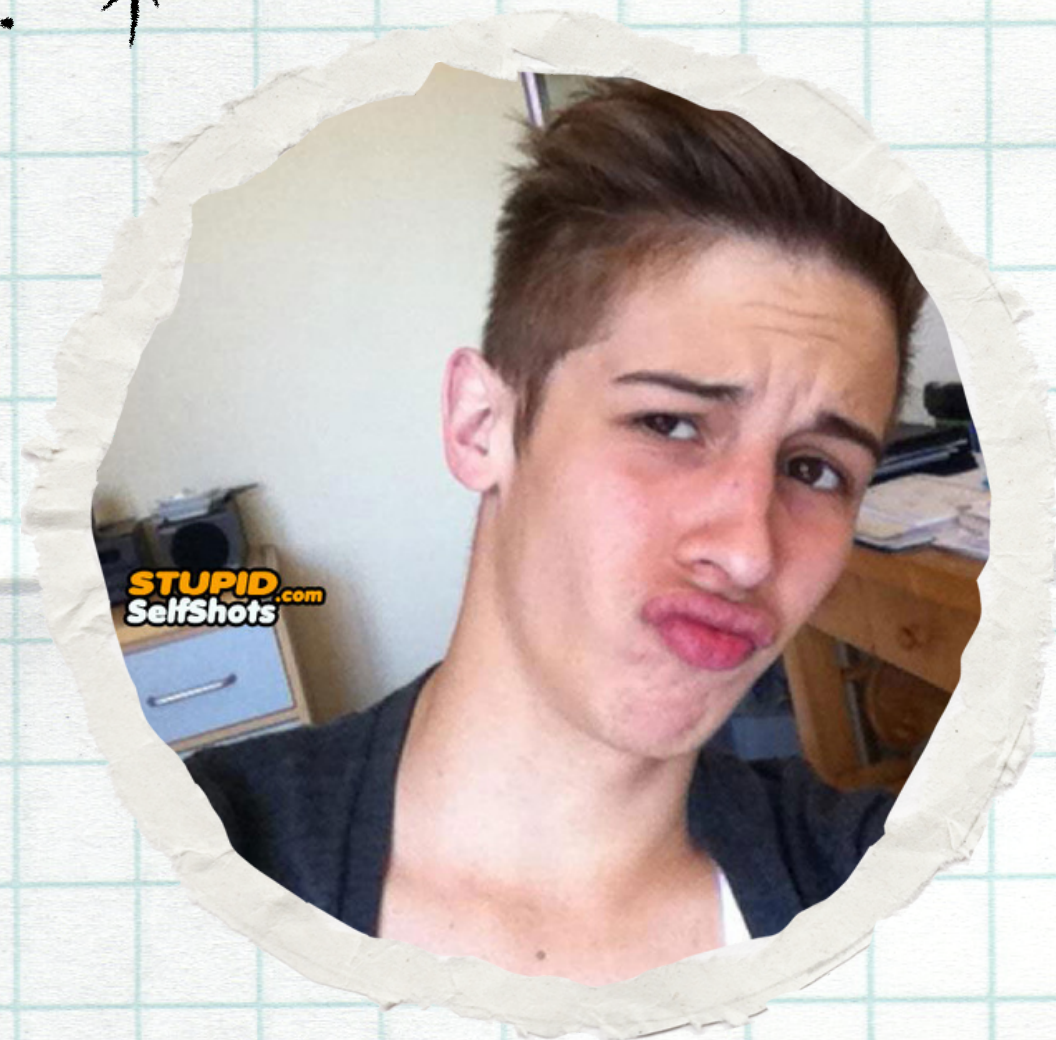
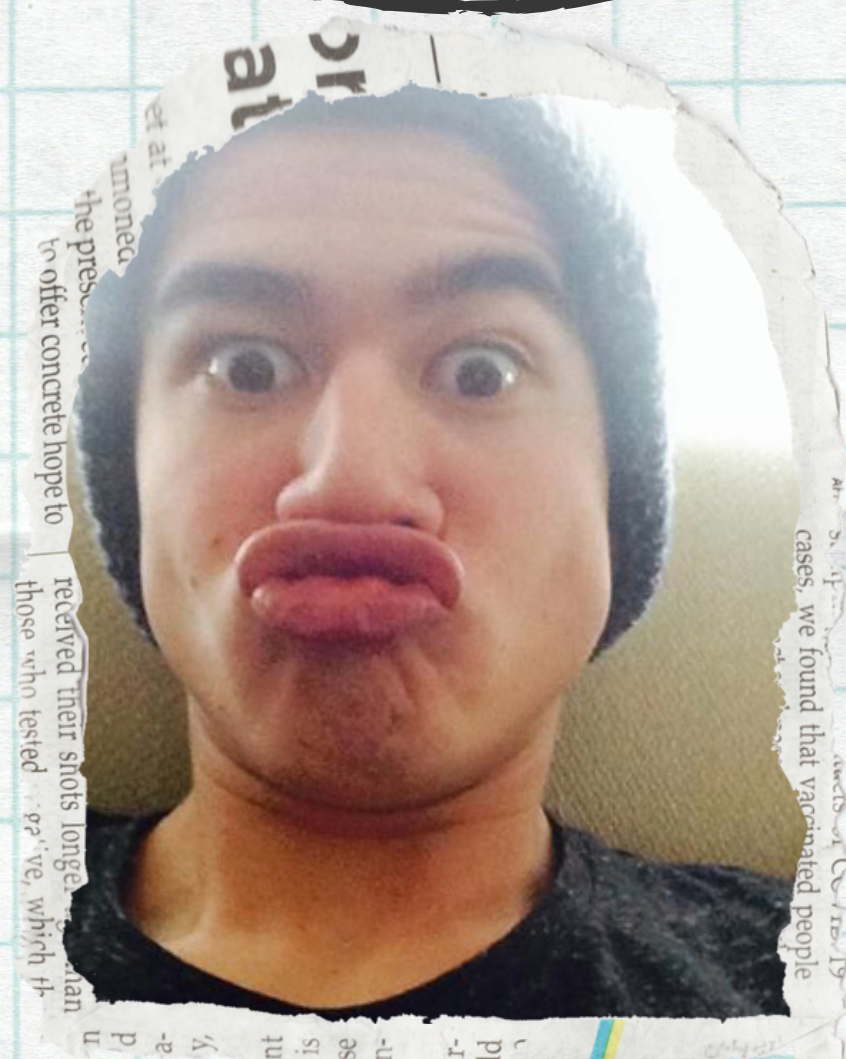
How does it work?



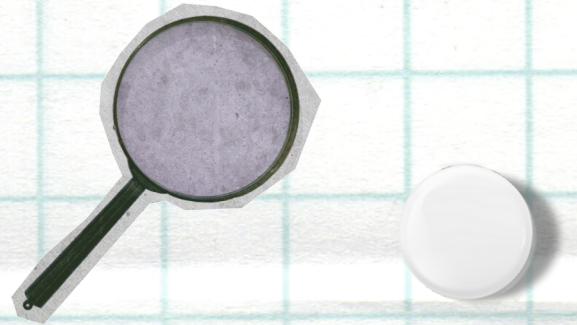
- the duck face is a common photo pose in profile photos on social media.
- The lips are pressed together as in a pout and often with the cheeks sucked simultaneously.
- The pose is most often seen as an attempt to appear attractive, but it can be ironic or an attempt to hide self-conscious embarrassment.



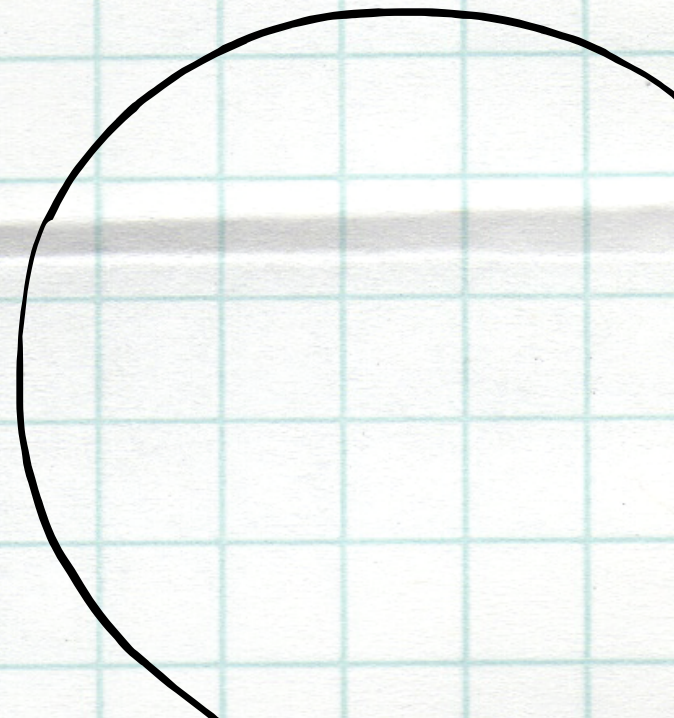
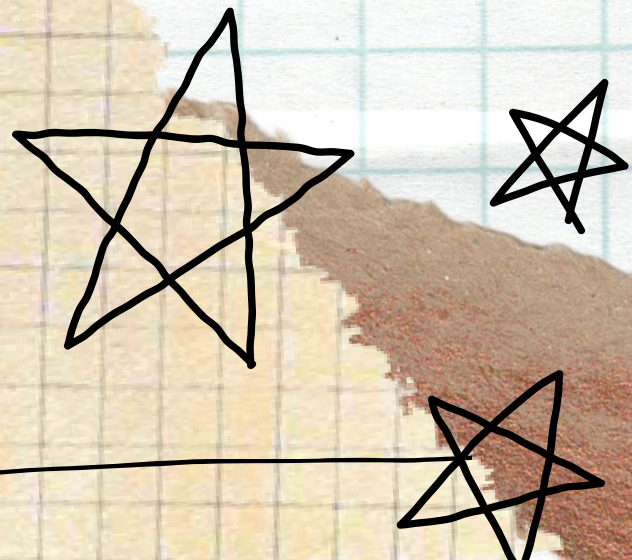
Example



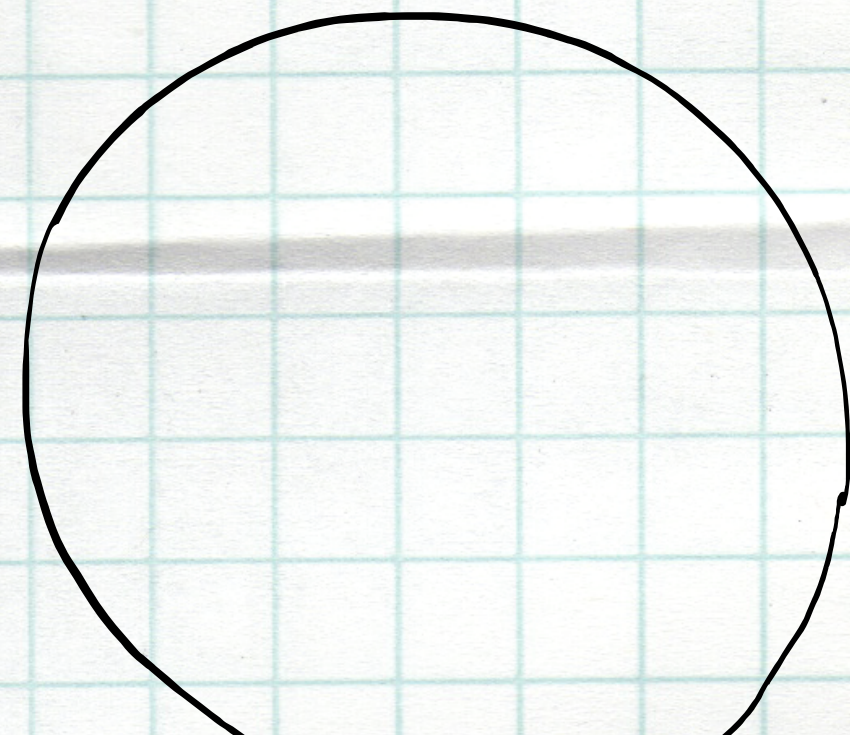
How did this trend start?



- This fashion emerged in 2006 and expands through all possible forms in the network, with women being the main protagonists.
- In 2007 it began to spread widely, both as a way of posing sensually among girls and as an object of ridicule among men and, of course, other women.



- On the precursors of this deplorable phenomenon for the eye and the livid of those who write to them, we could think of Ben Stiller in the leading role of Zoolander, where He makes the look Magnum or also known as "Blue Steel look" joining the lips.
- There is also an episode of the series Full House where a character wears this face and is nicknamed "Duckface".





we do not accept questions.

